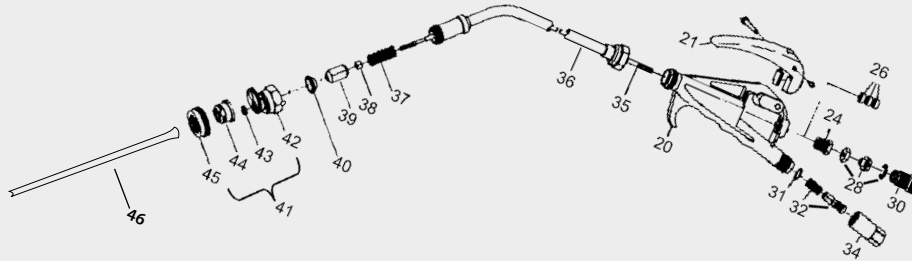


B&G 5 LITRE SPRAYER

EXTENDA-BAN VALVE



| # | PART | DESCRIPTION | # | PART | DESCRIPTION |
|----|-----------|---|----|---------|---------------------------------|
| 20 | VB-147 | Valve body | 36 | VE-154 | Valve extension, 8 in. (brass) |
| 21 | VT-140 | Valve trigger kit (includes SH-142 Screw housing, TS-141 Trigger screw) | | VE-155 | Valve extension, 18 in. (brass) |
| 24 | PN-150 | Packing nut (stainless steel) | | VE-164 | Valve extension, 24 in. (brass) |
| 26 | VP-151 | Valve packing washer (Each) | 37 | VS-156 | Valve spring |
| 28 | AS-148 | Adjustment screw kit (includes LN-149 Lock nut, SR-161 Snap ring) | 38 | SSL-157 | Seat stem nut |
| 30 | SL-162 | Safety lock nut | 39 | SS-158 | Seat stem |
| 31 | NG-146 | Nylon gasket | 40 | SP-159 | Soft seat gasket |
| 32 | MS-145KIT | Mesh strainer kit (includes SS-144 Strainer support | 41 | 5850-CC | Multitejet tip assembly |
| 34 | SA-143 | Strainer housing | 42 | 9751-M | Multitejet tip holder |
| 35 | VC-152 | Valve cable, 9 in. | 43 | 4190 | Viton gasket |
| | VC-153 | Valve cable, 18 in. | 44 | 5800-CC | Multitejet CC tip |
| | VC-163 | Valve cable, 24 in. | 45 | 4596 | Tip retainer |
| | | | 46 | 5700-B | Replacement Straw Tip |