

160,591 mm

164 mm

weld area - no print

text free

PRECAUTIONS: This material and its container must be disposed of in a safe way. Do not contaminate foodstuffs, eating utensils or food contact surfaces. Cover all water storage tanks before application. **HAZARDOUS TO BEES.** Do not apply directly to animals. Exclude animals during application. Do not apply to clothing and bedding. Not to be used on pet bedding, pet sleeping quarters or where pets frequently lie. All bats are protected under the Wildlife and Countryside Act 1981. Before treating any structure used by bats, consult Natural England, Natural Scotland or Natural Resources Wales. Do not touch treated surfaces until dry. Wash hands and exposed skin before meals and after use. Keep in a safe place. Do not apply to human clothing or bedding and do not apply in or around drains. To avoid risks to human or animal health, or the environment, comply with instructions for use.

When used by professional operators the following also applies: The COSHH (Control of Substances Hazardous to Health) Regulations 2002 (as amended) apply to the use of this product. Avoid excessive contamination of overalls.

STATUTORY CONDITIONS OF APPROVAL RELATING TO USE FOR USE ONLY AS AN INSECTICIDE. FOR AMATEUR AND PROFESSIONAL USE.

A 2 second burst will release 2.0g of product. Application rate for active: 0.006g/m² deltamethrin, 0.024g/m² Chrysanthemum Cinerariaefolium extract.* Users must comply in full with all their legal responsibilities under the Control of Pesticides Regulations 1986 (as amended), including complying with all Conditions of Approval. Read all precautions before use.

HSE NO. 9708-GB

DANGER: Extremely flammable aerosol. Pressurised container: may burst if heated. Causes serious eye irritation.

May cause respiratory irritation. Very toxic to aquatic life with long lasting effects. If medical advice is needed, have product container or label at hand. Keep out of reach of children. Keep away from heat, hot surfaces, sparks, open flames and other ignition sources. No smoking. Do not spray on an open flame or other ignition source. Do not pierce or burn, even after use. Avoid breathing gas/mist/vapours/spray. **IF IN EYES:** Rinse cautiously with water for several minutes. Remove contact lenses, if present and easy to do. Continue rinsing. Protect from sunlight. Do not expose to temperatures exceeding 50°C/122°F. Dispose of contents/container in accordance with local/national regulations. Use only in accordance with the directions on the label.



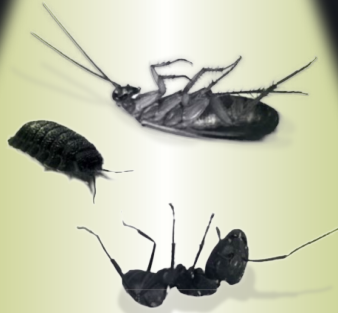
SOLVENT ABUSE CAN KILL INSTANTLY

Dethlac®

INSECTICIDAL LACQUER

KILLS ANTS, WOODLICE, COCKROACHES AND OTHER CRAWLING INSECTS

TRUSTED FOR OVER 60 YEARS



New Improved Formula
EFFECTIVE FOR MONTHS

Dethlac® Insecticidal Lacquer is a ready-to-use insecticide for amateur and professional use against ants, woodlice, cockroaches, fleas and other crawling insects. For use indoors and outdoors in domestic and commercial premises on hard non-porous surfaces and hard furnishings such as window frames (not UPVC), skirting boards, shelves and concrete patios.

Dethlac has been eliminating insects effectively since 1959.

Dethlac dries to a hard clear film which kills insects within a few hours of coming into contact with treated surfaces. One application remains fully effective for several weeks, even when it rains. You can wash the surface (with or without detergents) and Dethlac will go on killing insects.

Dethlac is not a space spray, it is a surface spray (spot, band, crack and crevice treatment). Blocked nozzles can be cleared by lifting off and soaking in methylated spirit or white spirit.

DIRECTIONS FOR USE: Shake well before use. For the control of insects, direct the spray at the ground and apply in bands 8-15cms (3-6"). Spray up to a maximum of 5 second bursts at a distance of 15-23cms (6-9"). Spray directly at surfaces on which insects walk or into cracks, crevices and other insect harbourages. Children and pets should be kept away from treated surfaces until product is dry. Test on a small inconspicuous area. Re-apply as necessary. Wear suitable protective synthetic/pvc gloves when using. When using do not eat, drink or smoke. Excess Dethlac may be removed from surface with methylated spirit, test small area first. USE ONLY AS DESCRIBED ON LABEL.

*This product contains Deltamethrin 0.0197% w/w Chrysanthemum Cinerariaefolium extract from open and mature flowers of Tanacetum Cinerariifolium obtained with supercritical CO2 0.04% w/w.

Batch / Expiry: See base of can.
UFI: 3500-C029-F00W-D762



250ml e 335
Made in UK
IGA Global Ltd
Emerald House, Whitehall Road,
Colchester, Essex, CO2 8HA
www.dethlac.co.uk 01206 861122



weld area - no print

text free

