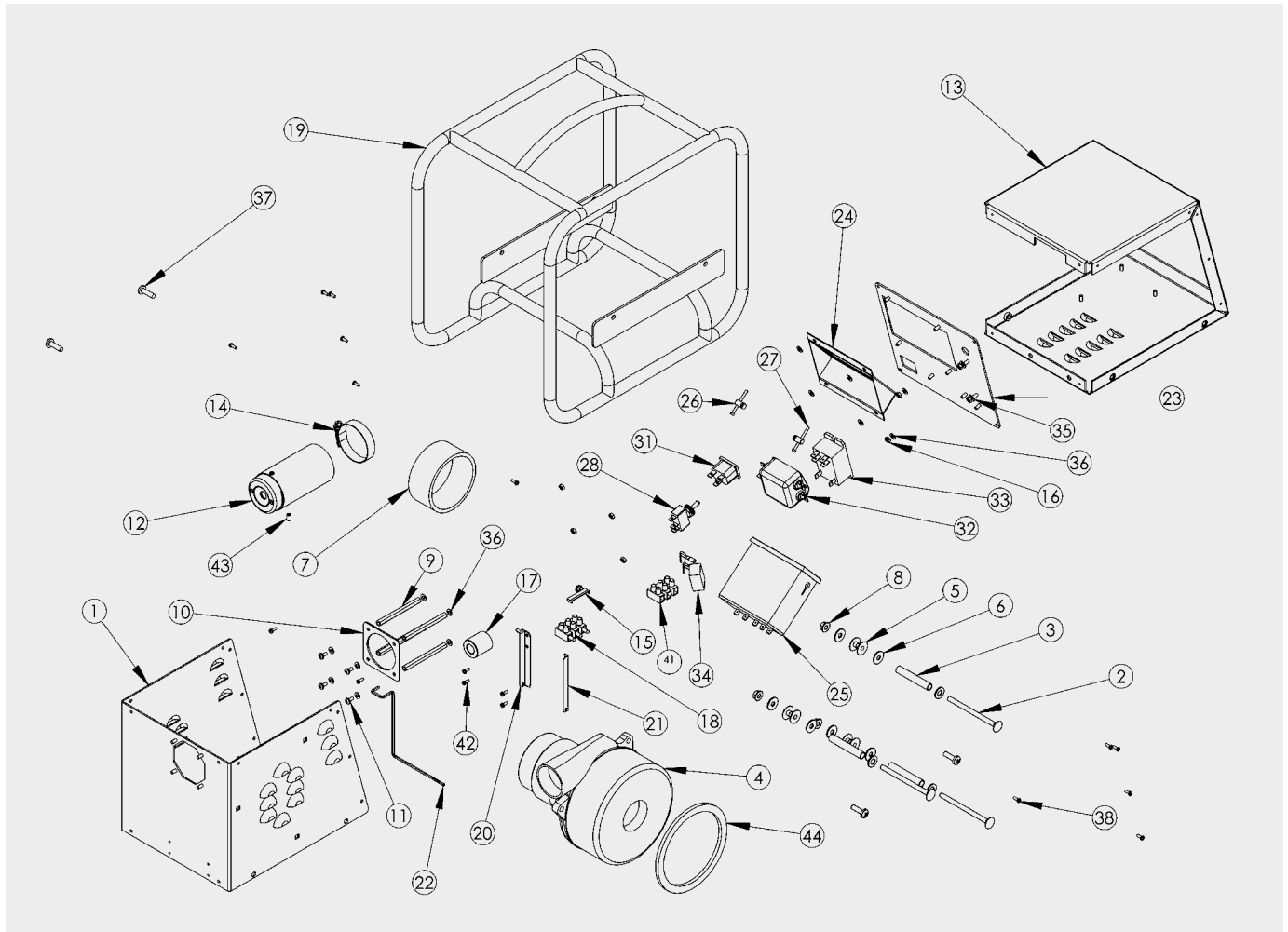


EXODUS® PARTS DIAGRAM

APPLICATION EQUIPMENT



COMPONENTS LIST

KEY	DESCRIPTION	PART #	QTY
1	Front Panel	MEXDFRNTP	1
2	Coach Bolt M6 X 90Mm	FSC6901	3
3	Spacer 57.5Mm	MEXDSPACER	3
4	Motor Assembly	EEXDMOTOR230	1
5	Shoulder Washer Nylon	WASHNYLSHLDR	6
6	M6 Washer 18Mm Od St.st	FWA607	6
7	Motor Hose	PEXDMTRHOSE	1
8	M6 Flange Nut	FFN609	3
9	M4 X 75Mm Stand Off	STDOFFM4X75PLD	4
10	Nozzle Plate	MEXDNOZZP	1
11	M4 X 8Mm Pozi Pan Screw St.st	FSC4201	4
12	Nozzle Assembly	ANOZZLEEXD	1
13	Rear Panel	MEDREARP	1
14	Jubilee Clip 45-60Mm Zinc Plated	FSWD40/60B	1
15	Flat Tie Holder Fth-11-8-01 Richco	TWNYLHLD	1
16	M4 Nyloc Nut St.st	FNT401	11
17	Ferrite	EFERRITEEXD	1
18	Conn Block Male	ETEMAI12M	1
19	EXODUS FRAME	MEXDFRAMESLV	1
20	Bottle Bracket A	MEXD0TBA	1
21	Bottle Bracket B	MEXD0TBB	1
22	Bottle Lever	MEXD0TLVRSS	1
23	Control Panel	MEXDCNTLP	1
24	Timer Housing	MEXDTIMRH	1
25	Timer	EEXDTIMER230	1
26	Timer Mounting Lug	N/A	2
28	Toggle Switch 3 Position	ESWITCH3	1
31	Iec Inlet Black	ETEMAI1X/A	1
32	Schaffner Filter	EFILTEREXD	1
33	T92p7a22-240 Relay 240Vac 30A	ERELAYDPN0230	1
34	Rifa Capacitor	ECAPACEXD	1
35	M5 Plain Washer	FWA502	2
36	M4 Shakeproof Washer St.st	FWA401	23
37	M6 X 20Mm Pozi Pan Screw St.st	FSC6601	4
38	No6 3/8" Pozi Pan Self Tapper Black	FSC6002	18
39	M8 Washer 16Mm Od Bzp	FWA807	3
41	Conn Block Female	ETEMAI12F	1
42	No6 2/8" Pozi Pan Self Tapper St.st	FSC6001	4
43	Tygon Seal	C-140	1
44	Motor Gasket Exul/104A	PEXDMTRGSK	1