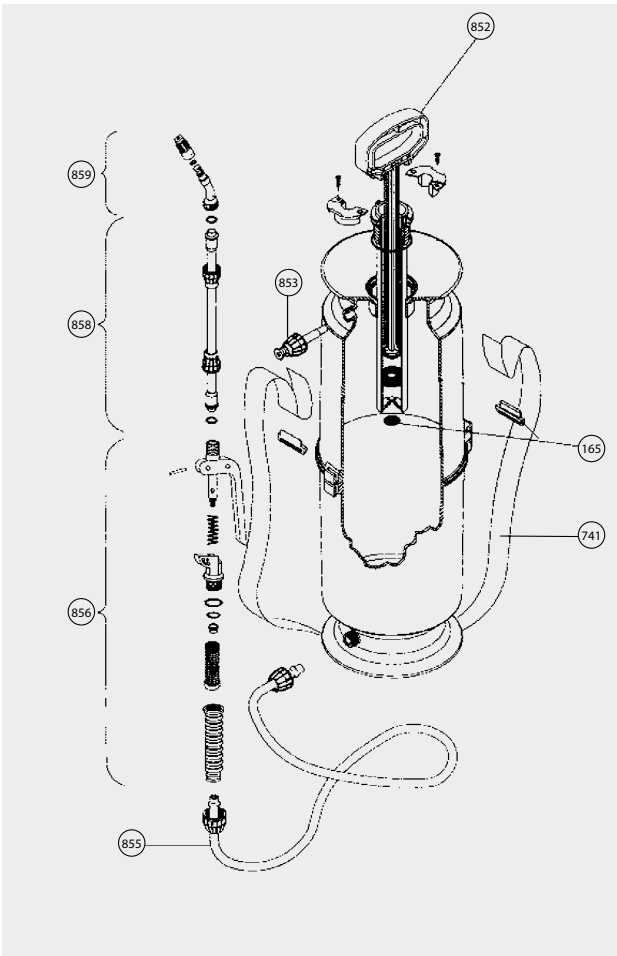


IK9 SPRAYER



| PART NO. | DESCRIPTION | |
|-----------------------------|-----------------------------------|--|
| 165 | Footvalve rubber | |
| 741 | Shoulder strap complete | |
| 852 | Complete pump assembly | |
| 853 | Pressure relief valve | |
| 855 | Hose assembly | |
| 856 | Complete trigger valve | |
| 858 | Lance tube assembly | |
| 859 | Complete adjustable nozzle | |
| NOT SHOWN ON DIAGRAM | | |
| IKN/CR | Crack and Crevice nozzle assembly | |
| 745 | Telescopic lance | |